



MISSION STATEMENT

Yongsan International School of Seoul is a community of students, parents, and Christian educators working together to instill in each student a passion for truth, a commitment to excellence, and an appreciation for diversity.

VISION STATEMENT

YISS graduates are truth-seeking leaders who are creative, collaborative, compassionate, and committed to impacting the world with servants' hearts.

CONTACT

285 Itaewon-ro, Yongsan-gu
Seoul, South Korea 04347
Phone: +82 (2) 797-5104
Fax: +82 (2) 797-5040
www.yisseoul.org
CEEB Code: 682230

John Kennedy
Headmaster
headmaster@yisseoul.org

Dave Baniszewski
High School Principal
higschool@yisseoul.org

April Reyes
Admissions Director
admissions@yisseoul.org

Wilson Lee
College & School Counselor
hsguidance@yisseoul.org

Bethany Dawson
School Counselor
hsguidance@yisseoul.org

Deissy Rosenbaum
School Counselor
hsguidance@yisseoul.org

YISS complies with the
NACAC Code of Ethics and
Professional Practices.

THE SCHOOL

Founded in 1990, Yongsan International School of Seoul is a private, coeducational day school, offering an American college preparatory curriculum to the international community in Seoul. Located in the heart of the nation's capital, YISS encompasses a rigorous academic environment emphasizing the development of character, with a sound foundation for morals, ethics, and values focused on meeting the needs of our students within the context of the culture of our host country.

ACCREDITATION

Yongsan International School of Seoul is accredited by the Western Association of Schools and Colleges (WASC), the Association of Christian Schools International (ACSI), and is recognized by the Seoul Metropolitan Office of Education (SMOE).

STUDENT BODY

High school enrollment 9th-12th grade	299
Members of the Class of 2019	69
Number of countries represented	35
Percent US passport holders	57%
Percent admitted to 4-year colleges	100%

FACULTY & STAFF

Full-time teaching faculty members	40
Full-time administrators	11
Professional staff	4
Percent with a master's degree or higher	80%
Student to faculty ratio	7:1
Average class size	13

SCHOOL CALENDAR

There are 178 school days divided into two semesters. The first semester is in session from August 13 through December 14. The second semester is in session from January 7 through June 5. Graduation is on May 31, 2019. YISS students typically take eight classes a year, where the average school day is divided into four 85-minute blocks with a two-day rotation. On Wednesdays, students participate in chapel or assembly during Opportunity Block. For the remaining four days of the week, Opportunity Block is used for students to participate in extracurricular clubs during regular school hours.

CREDITS & GRAD REQUIREMENTS

In 9th-12th grade, one credit is awarded for each one-year course successfully completed. One-half credit is earned for completion of one semester. A minimum of 24 credits is required for graduation. Students do not receive course credit for being in study halls or serving as teacher assistants, but these are recognized on transcripts. Math Lab and Learning Support are additional study halls in which assistance is provided by teachers in those departments.

Subject Area	Required for Graduation	Recommended for University	Required for Grad with Honors
English	4 credits	4 credits	4 credits
Mathematics	2 credits	3-4 credits	4 credits
Science	2 credits*	3-4 credits	3 credits
Social Studies	3 credits**	3-4 credits	3 credits
Foreign Language	1 credit	3-4 credits	3 credits
Physical Education	1 credit	2 credits	1-3 credits***
Fine Arts	2 credits	2-3 credits	1-3 credits***
Computer	1 credit	1 credit	1 credit
Theology, Ethics & Values	4 credits	4 credits	4 credits
Electives (non-compulsory credits)	4 credits	4 credits	4 credits

(*Credits must be from Biology, Chemistry, or Physics. **U.S. citizens planning to attend U.S. institutions are required to take U.S. History. ***Fine Arts and Physical Education classes may be combined to achieve Honors Diploma status. A total of four credits in the two areas is necessary to accomplish this goal.)

GRADE POINT AVERAGE

The grade point average includes all courses taken at YISS but does not include transfer grades from other schools. Advanced Placement (AP) courses are granted one additional point per course in the computation of GPA. Students are limited to two AP classes per year. Exceptions are made upon approval. Due to the college-bound nature of our school, YISS does not rank students.

PROGRAMS OF STUDY (2018-2019)

Courses are shown in general progression of years.
*Courses that require teacher approval.

English

Literature for Life
World Literature
American Literature
British Literature
AP Language and Composition*
AP Literature and Composition*
AP Seminar*
English Language Learning (Beginning/Intermediate)

Theology, Ethics, Values (Semester Classes)

Life Skills & Intro to World view
Introduction to Logic
Old Testament Survey
Philosophy of Science
Survey of World Religions
New Testament Studies
Intro to Philosophy I – II
Christian Theology I – II
History of Thought
Modern Philosophy
Senior Seminar

Computer

Computer Applications: Video & Design

Social Studies

World History I: Beginning-1450
World History II: 1450-Present
United States History: 1877-Present
Comparative Government/Economics
AP U.S. History*
AP U.S. Government*
AP Comparative Government*
AP European History*
AP World History*
AP Psychology*
AP Art History*

Mathematics

Algebra I ~ II
Geometry
Pre-Calculus w/ Trigonometry*
Calculus I*
AP Calculus AB*
AP Calculus BC*
AP Computer Science A*
AP Computer Science Principles*
AP Statistics*

Science

Biology
Chemistry
Chemistry in the Community
Physics
Human Anatomy and Physiology
AP Chemistry*
AP Biology*
AP Physics 1*
AP Physics C: Mechanics*

Physical Education

Health and Physical Education
Conditioning and Weight Training

Foreign Language

Spanish I, II, III*, IV*
French I, II, III*, IV*
Korean I*, II*, III*, IV*
Korean Literature*
Mandarin I, II, III*, IV*
Japanese I, II, III*, IV*
AP Japanese Language & Culture*
AP Spanish Language & Culture*
AP Chinese Language & Culture*

Fine Arts

Foundations of Art & Design
Drawing & Painting
Drawing & Painting II*
Visual Design 2D/3D
AP Studio Art – 2D/3D/Drawing*
Yearbook
Drama
Concert Band, Jazz Band, Strings,
Yongsan Singers
Yongsan Chamber Choir*
Digital Media Marketing*
Speech and Debate
Journalism
AP Art History*
AP Music Theory*

Additional Programs

AP Research*
Arrowsmith*

Non-Credit Courses

Study Hall
Study Hall – Math Lab*
Study Hall – Learning Support*
Teacher's Assistant*

GRADING SYSTEM

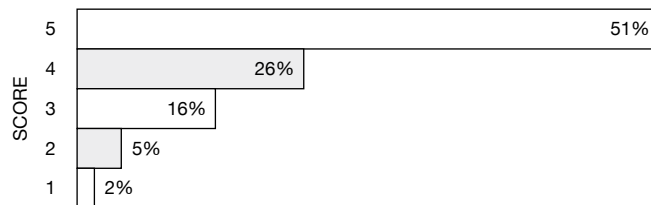
LETTER GRADE	GRADE %	GRADE POINT AVG	AP COURSES
A+	99-100	4.00	5.00
A	96-98	4.00	5.00
A-	94-95	3.67	4.67
B+	92-93	3.33	4.33
B	86-91	3.00	4.00
B-	84-85	2.67	3.67
C+	82-83	2.33	3.33
C	76-81	2.00	3.00
C-	74-75	1.67	2.67
D+	72-73	1.33	1.33
D	68-71	1.00	1.00
D-	66-67	0.67	0.67
F	65 and below	0.00	0.00

AVERAGE SAT SCORES

	C. Reading	Math	Writing	Composite
Class of 2016	658	693	685	2036
Class of 2017	659	715	693	2067
2018 National Avg	536	531	N/A	1068
Class of 2018	680	760	N/A	1460

2018 AP SCORES

Total AP Students: 145 • Total Exams Taken: 289

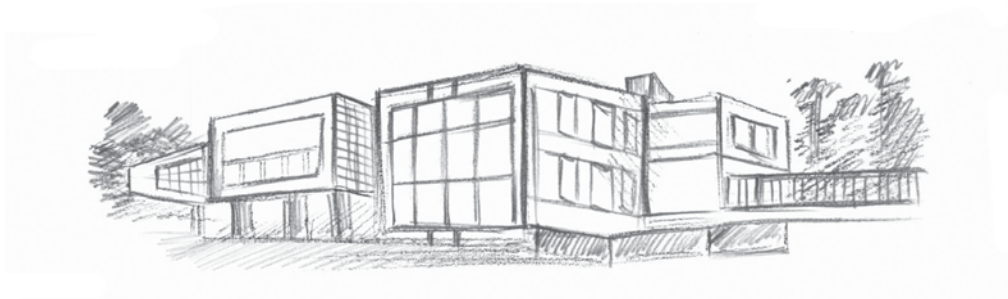


Testing restrictions on international students & US citizens abroad: In recent years, and particularly this year, our students have had less access to SAT/SAT Subject and ACT tests because of fewer test dates abroad, fewer sites offering the test, score cancellations, technology difficulties, and higher fees. We ask that all higher education institutions take this into account when evaluating our students' applications.

UNIVERSITY & COLLEGE ADMISSIONS (2016-2018)

(Those in the Class of 2018 have matriculated to the following schools in **bold**.)

- Abilene Christian University
Academy of Art University
Adelphi University
American University
Arizona State University
Art Center College of Design
Australian National University
Bard College
Barnard College
Baylor University
Berklee College of Music
Binghamton University
Biola University
Boston College
Boston University
Bradley University
Brigham Young University-Hawaii
Brigham Young University, Idaho
Brown University
Bryn Mawr College
California Institute of the Arts
California Polytechnic State University, San Luis Obispo
California State Polytechnic University - Pomona
California State University, Fullerton
California State University, Long Beach
California State University, Northridge
Calvin College
Carnegie Mellon University
Case Western Reserve University
Centenary University
Central Michigan University
Chapman University
Chinese University of Hong Kong, The
City College of New York CUNY
City University of Hong Kong
Claremont McKenna College
Colgate University
College of William and Mary
Colorado Technical University
Columbia University
Connecticut College
Cornell University
Dalhousie University
Dartmouth College
DigiPen Institute of Technology
Drexel University
Duke University
Emerson College
Emory University
Ewha Womans University (South Korea)
Falmouth University (UK)
Fashion Institute of Technology
Fordham University
Franklin & Marshall College
Franklin University Switzerland
George Mason University
Georgetown University
Georgia Institute of Technology
Gordon College
Harvard University
Haverford College
Hillsborough Community College
Hong Kong Polytechnic University, The
Hong Kong University of Science and Technology, The
Hult International Business School - London
Imperial College London (UK)
Indiana University at Bloomington
James Madison University
Johns Hopkins University
KAIST - Korea Advanced Institute of Science & Technology
Keio University (Japan)
Kettering University
Kingston University (UK)
Knox College
Laguna College of Art and Design
LDS Business College
Liberty University
London Metropolitan University (UK)
- Long Island University, Post
Loyola Marymount University
Loyola University Chicago
Macquarie University (Australia)
Manhattan College
Maryland Institute College of Art
McDaniel College
McGill University
MCPHS - Massachusetts College of Pharmacy & Health Sciences
Michigan State University
Mississippi Gulf Coast Community College
Missouri University of Science and Technology
Mount Holyoke College
Nanyang Technological University (Singapore)
National University of Singapore
New England Conservatory of Music
New York University
Newcastle University (UK)
North Carolina State University
Northeastern University
Northwestern University
Nottingham Trent University (UK)
Olin College of Engineering
Otis College of Art and Design
Oxford Brookes University (UK)
Pace University, New York City
Pennsylvania State University
Pepperdine University
Pitzer College
Pomona College
Pratt Institute
Princeton University
Purdue University
Queen's University
Rensselaer Polytechnic Institute
Rhode Island School of Design
Rice University
Ringling College of Art and Design
Rochester Institute of Technology
Rutgers University-The State University of New Jersey
S P Jain School of Global Management, Singapore
Saint Louis University
San Francisco State University
Santa Clara University
Sarah Lawrence College
Savannah College of Art and Design
School of the Art Institute of Chicago
School of the Museum of Fine Arts
School of Visual Arts
Seton Hall University
Simmons University
Simon Fraser University
Smith College
Southampton Solent University (UK)
St. John's University
St. John's University - Queens Campus
Stanford University
Stevens Institute of Technology
Stony Brook University
Suffolk County Community College, Ammerman
Suffolk University
Sungkyunkwan University (South Korea)
Syracuse University
Temple University
Texas A&M University
Texas State University
Texas Tech University
The American University of Paris (France)
The College of New Jersey
The Cooper Union for the Advancement of Science & Art
The Evergreen State College
The George Washington University
The Juilliard School
The New School - All Divisions
The Ohio State University
The University of Queensland (Australia)
The University of Tampa
- The University of Texas, Austin
Trinity Western University
Truman State University
Tufts University
Tufts University - School of Museum of Fine Arts
United States Air Force - Defense Language Institute
United States Coast Guard Academy
United States Military Academy - West Point
United States Navy
University at Buffalo The State University of New York
University College London (UK)
University for the Creative Arts at Farnham (UK)
University of Brighton (UK)
University of British Columbia
University of Calgary
University of California, Berkeley
University of California, Davis
University of California, Irvine
University of California, Los Angeles
University of California, Riverside
University of California, San Diego
University of California, Santa Barbara
University of California, Santa Cruz
University of Chicago
University of Colorado at Boulder
University of Connecticut
University of Essex (UK)
University of Florida
University of Hong Kong, The
University of Houston
University of Illinois at Chicago
University of Illinois at Urbana-Champaign
University of Kent (UK)
University of Maryland, Baltimore County
University of Maryland, College Park
University of Massachusetts Dartmouth
University of Massachusetts, Amherst
University of Massachusetts, Boston
University of Michigan
University of Minnesota, Twin Cities
University of Missouri Columbia
University of North Carolina School of the Arts
University of Notre Dame
University of Ontario Institute of Technology
University of Oregon
University of Pennsylvania
University of Pittsburgh
University of Reading (UK)
University of Rhode Island
University of Rochester
University of San Diego
University of South Florida, Tampa
University of Southern California
University of St Andrews (UK)
University of Surrey (UK)
University of Sydney (Australia)
University of the Pacific
University of Toronto
University of Utah - Asia Campus
University of Virginia
University of Washington
University of Windsor
University of Wisconsin, Madison
University of York (UK)
Vanderbilt University
Villanova University
Virginia Tech
Waseda University (Japan)
Washington University in St. Louis
Wayne State University
Wellesley College
Western University
Wheaton College IL
Woodbury University
Yale University
Yale-NUS College (Singapore)
York University



YISS Yongsan
International
School of Seoul

285 Itaewon-ro, Yongsan-gu, Seoul, Korea 04347
Phone: +82 (2) 797-5104 • Fax: +82 (2) 797-5040
www.yisseoul.org

